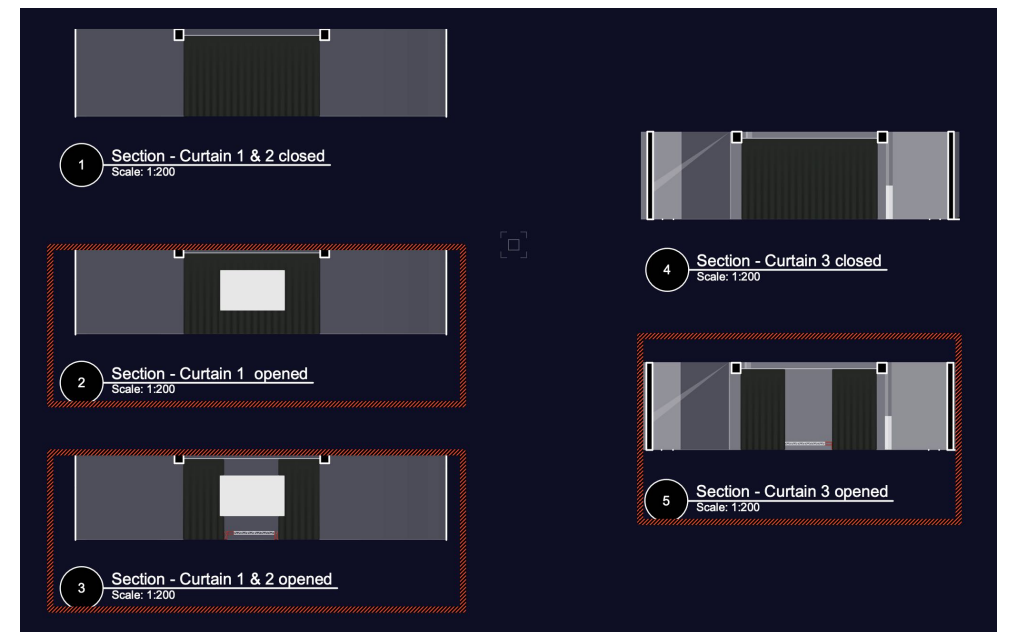
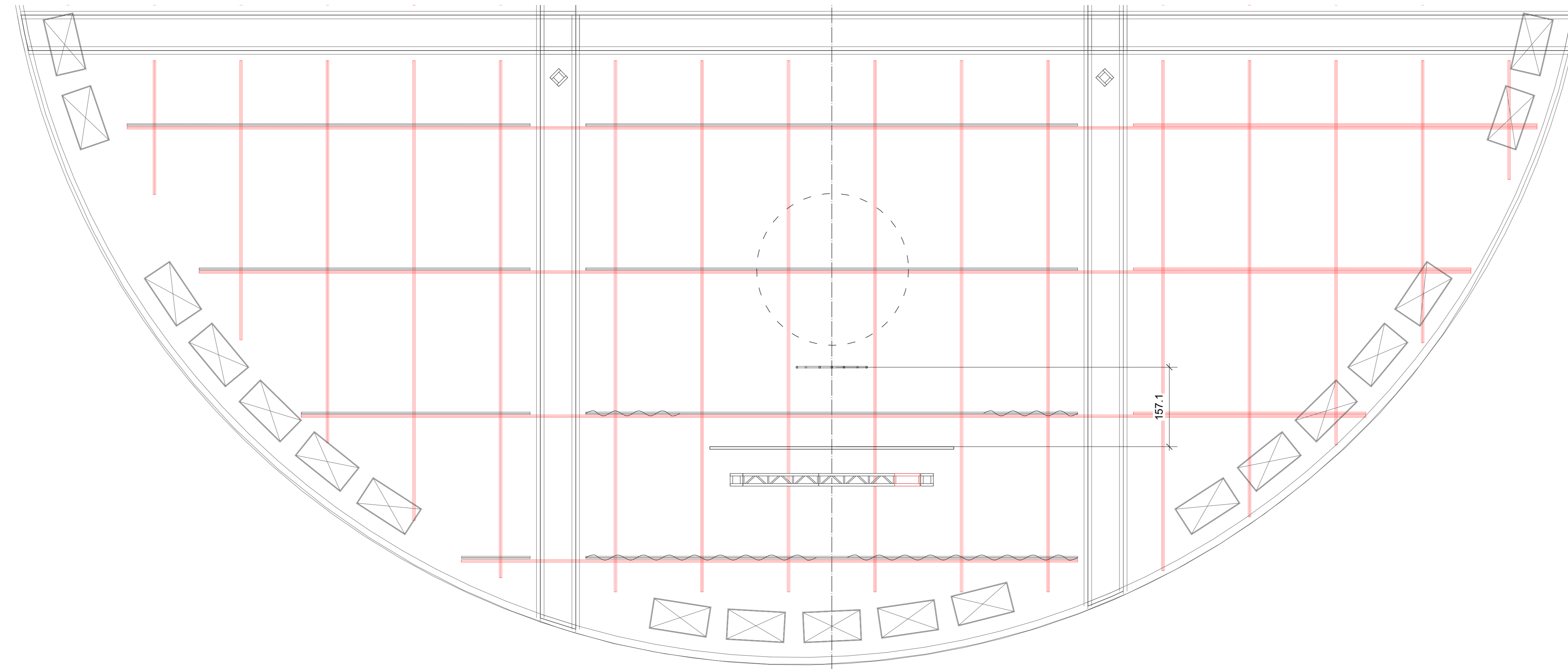


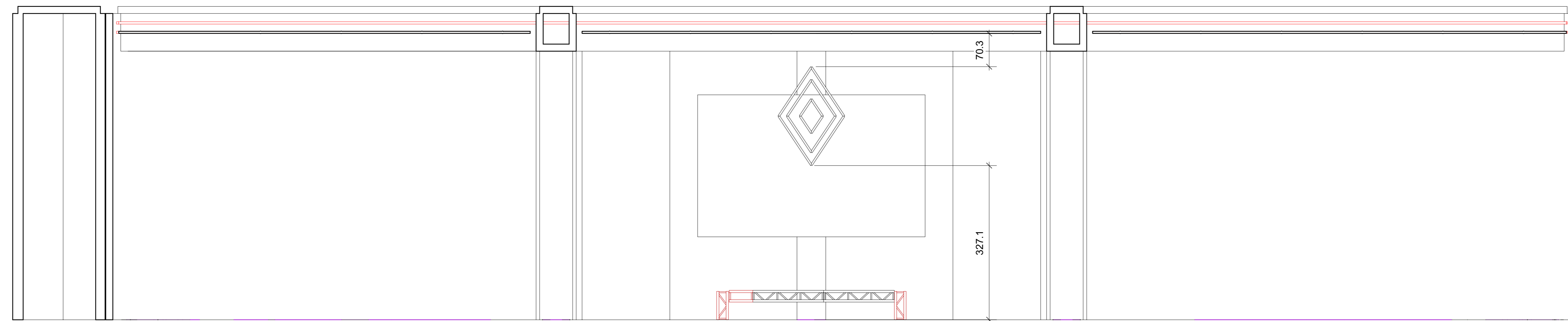
2 Section
Scale: 1:200



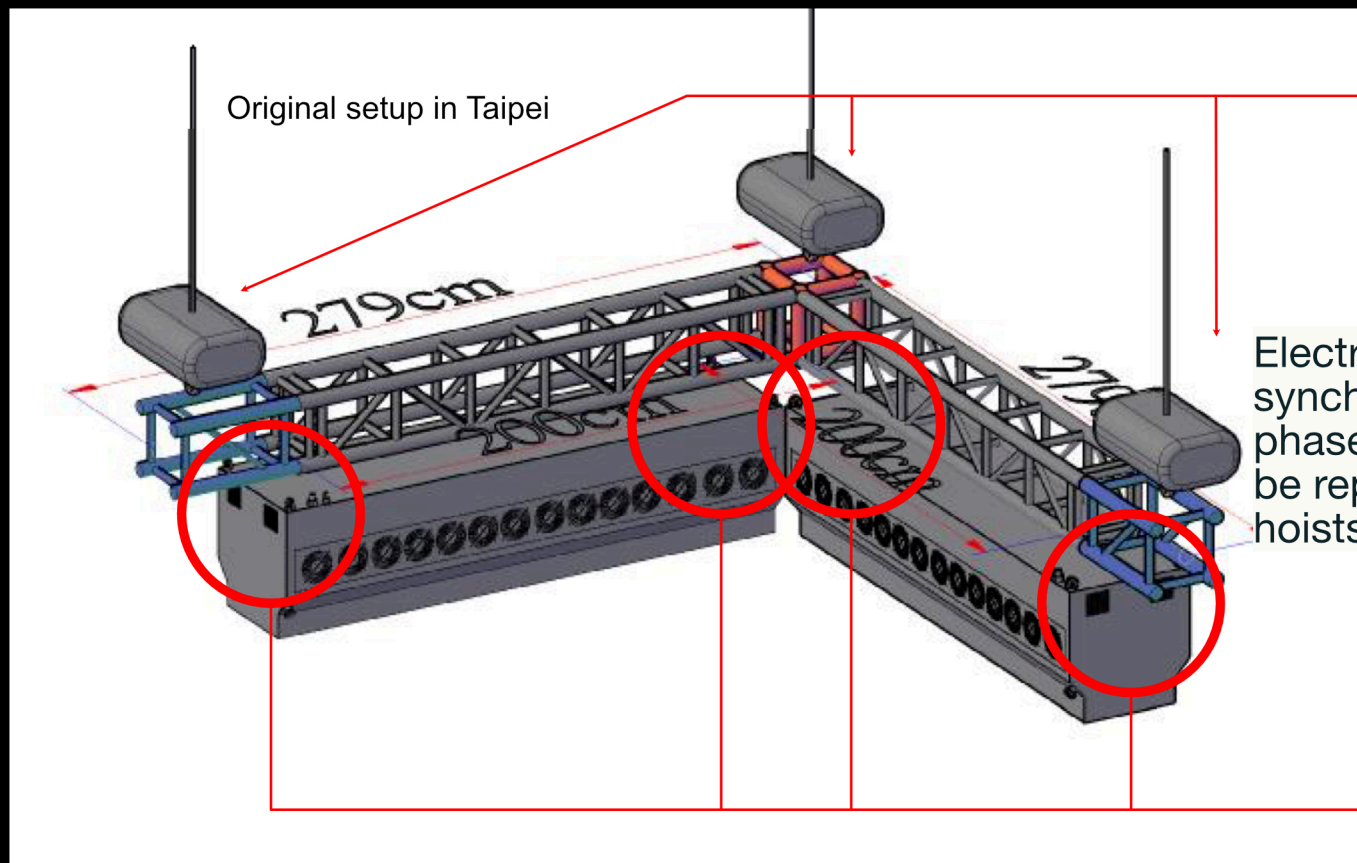


C.L.

2 TOTEM top/view
Scale: 1:50



1 TOTEM
Scale: 1:50

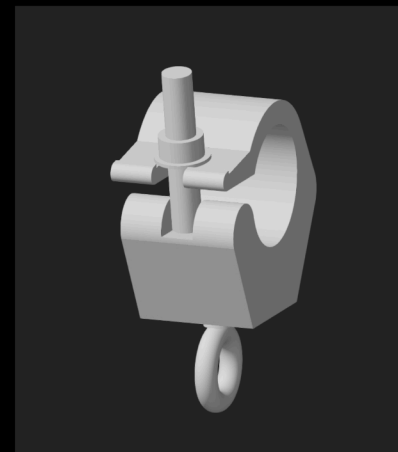


Original setup in Taipei

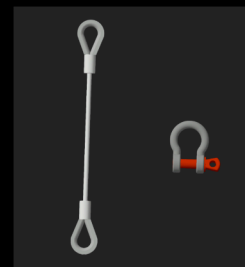


The manual hoist (3 tons) with fog screen from China.

Electric hoist motor with synchronization feature - 3-phase 208V EuroType, can it be replaced with manual hoists

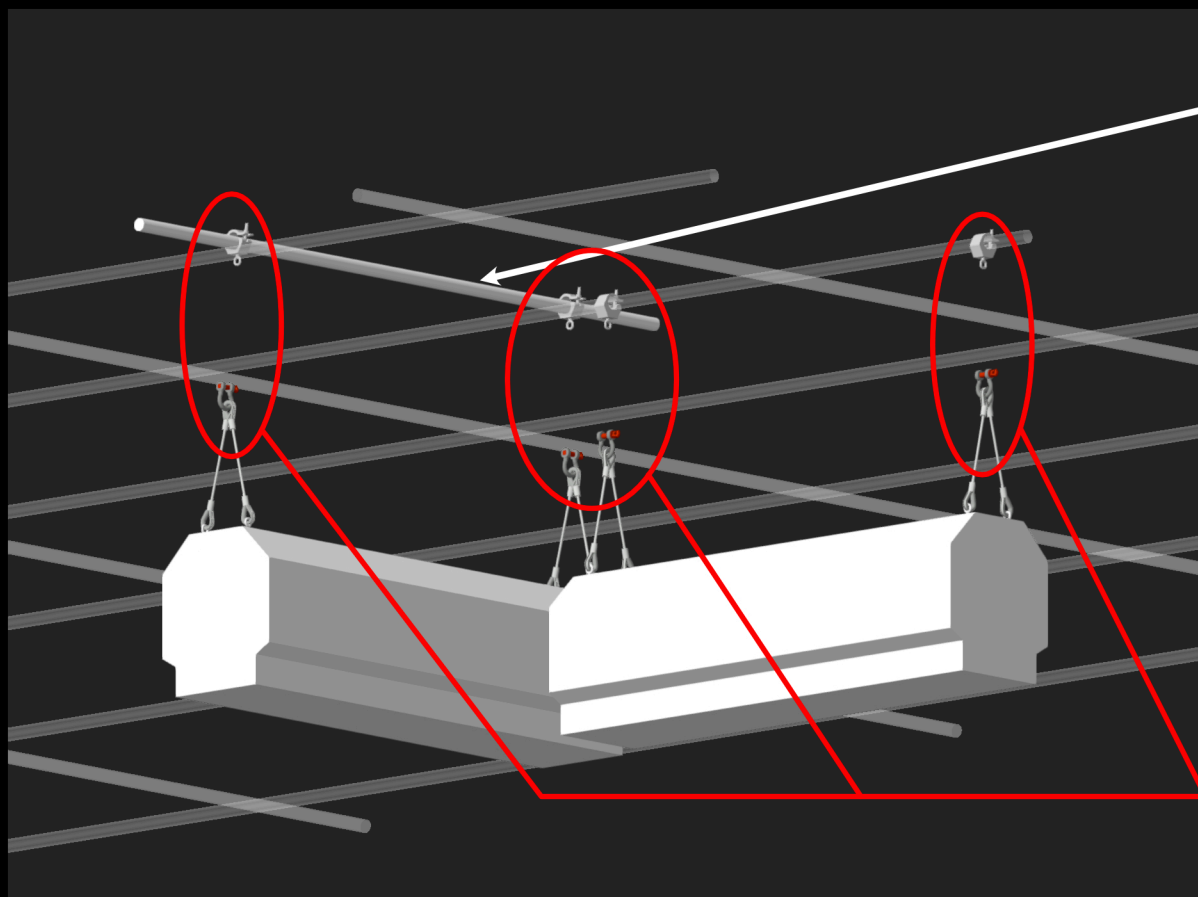


The entire setup can be connected to the pipe grid system in the south tank using a rigging clamp with an eye bolt. The eye bolt will be hooked to the hoist with safety rigging steel.

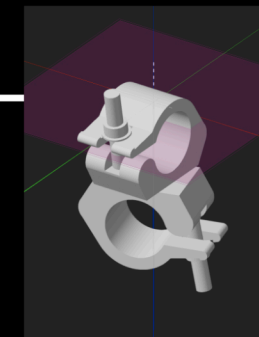


Connect the fog screen to the truss (FD 22 - 33 EuroType or any type in Europe) using rigging steel and shackles.

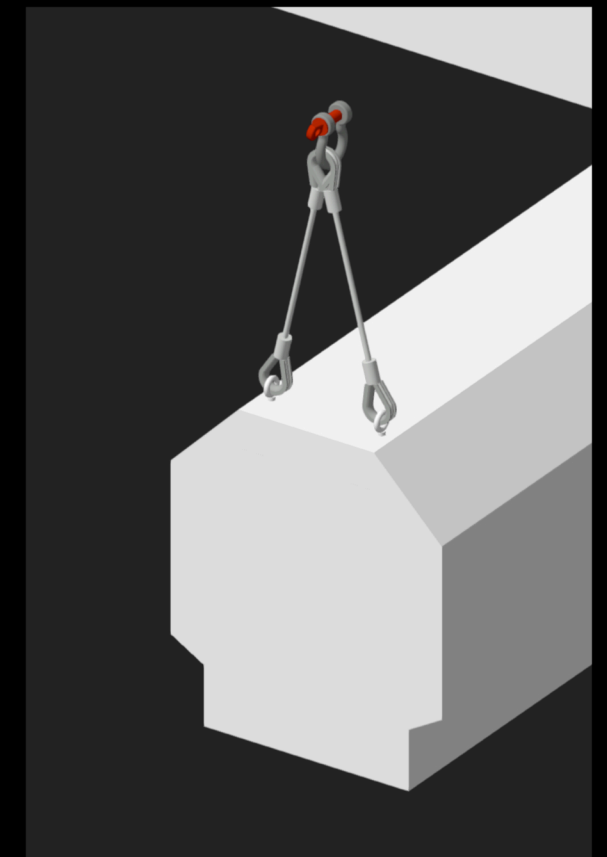
Possible setup in Southtank Tate



Extra pipe connect with 90 degree rigging clamp.



connection with hoist (Manual or Electric motor type)



Rigging Steels with Shackle on the fog screen

Fogscreen Rigging Setup